



TISHMAN SPEYER

# 333 Bush





*Make the Most of* **Each Day**



# Open Doors to Discovery

---

When you work at 333 Bush Street, it begs the question: what don't you have? A world-class building inside and out, you'll find amenities and services fit for everyone and any lifestyle. Our modern lobby renovations, state-of-the-art fitness center, and EV charging stations will help keep you feeling focused and recharged every day.





# A Commitment to Health

---

Now more than ever, we are committed to the wellness and safety of our customers by setting a new standard for cleaning, health and hygiene at the workplace.



100% outside air. Optimized HVAC air circulation to help draw in more fresh air from the outside.



Upgraded air filters to allow for the maximum allowable filtration specifications.



Employment of CDC recommended, EPA-registered anti-viral disinfectant cleaners.



# Building Healthy, *Connected* *Communities.*

Our commitment to building healthy, connected communities across the world is top of mind in all that we do and stems from our commitment to ESG. At Tishman Speyer, ESG encompasses the major efforts we make around sustainability, resource efficiency and healthy buildings, community engagement, DE&I and employee engagement, and our investment in culture, integrity and human capital.



## ESG

We are passionate about our commitment to responsible environmental stewardship and civic engagement.



## Community

Our teams are always willing to put in the extra effort to support tight-knit neighborhoods and connected communities.



## Placemaking

Investing in ESG means investing in people, and investing in people leads to stronger, more resilient communities.



## Hospitality/Creativity

ESG has become a big part of the way we think about creating inspired environments. Green design can make a huge impact on wellbeing.



## Innovation

Healthy buildings call for innovative solutions. As a future-focused business, it is crucial to consider the impact that our projects have on the world.



## Flexibility & Partnership

Strategic, social and civic partnerships are quite familiar to Tishman Speyer. Our partnerships help ensure our projects inspire communities and take care of them.



Union Square



Apple Store



Wayfare Tavern

# Right in the Heart of the Bay

Find yourself in the middle of just about everything — stunning nature, trendy cultural hotspots, and over 50 unique dining experiences within two blocks. At 333 Bush, the possibilities are truly endless.



St. Mary's Square Park



Chinatown



**General Health & Wellness Offerings**



**Laundry/Dry Cleaning**



**Chair Massages**



**Hassle-free Catering & On-site Food Delivery**



**Secure Parcel Package Lockers**

# ZO.

---

Discover a sense of well-being and community with curated services and amenities exclusively designed for tenants of 333 Bush.

Unlock the freedom to put yourself first with the FindYourZO. app.



# Elevated, flexible workspaces on a *global scale*

**studio**  
BY TISHMAN SPEYER

**An entire story of Coworking at its best, on the 4th floor.**

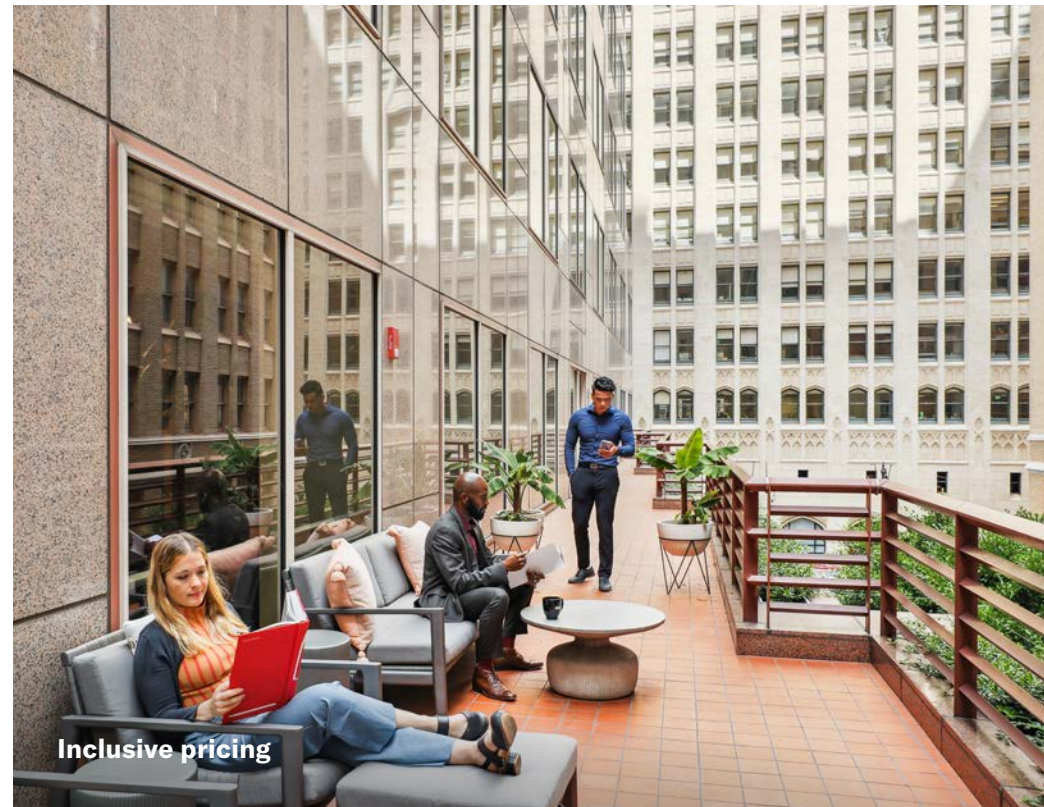
Private, move-in ready office space with premium furniture and shared amenities. Access to meeting rooms and common areas to inspire creativity, collaboration, and productivity. Explore Studio by Tishman Speyer at [yourstudio.com](https://yourstudio.com)



Elevated design



Flexible terms



Inclusive pricing



# Steps From Everywhere

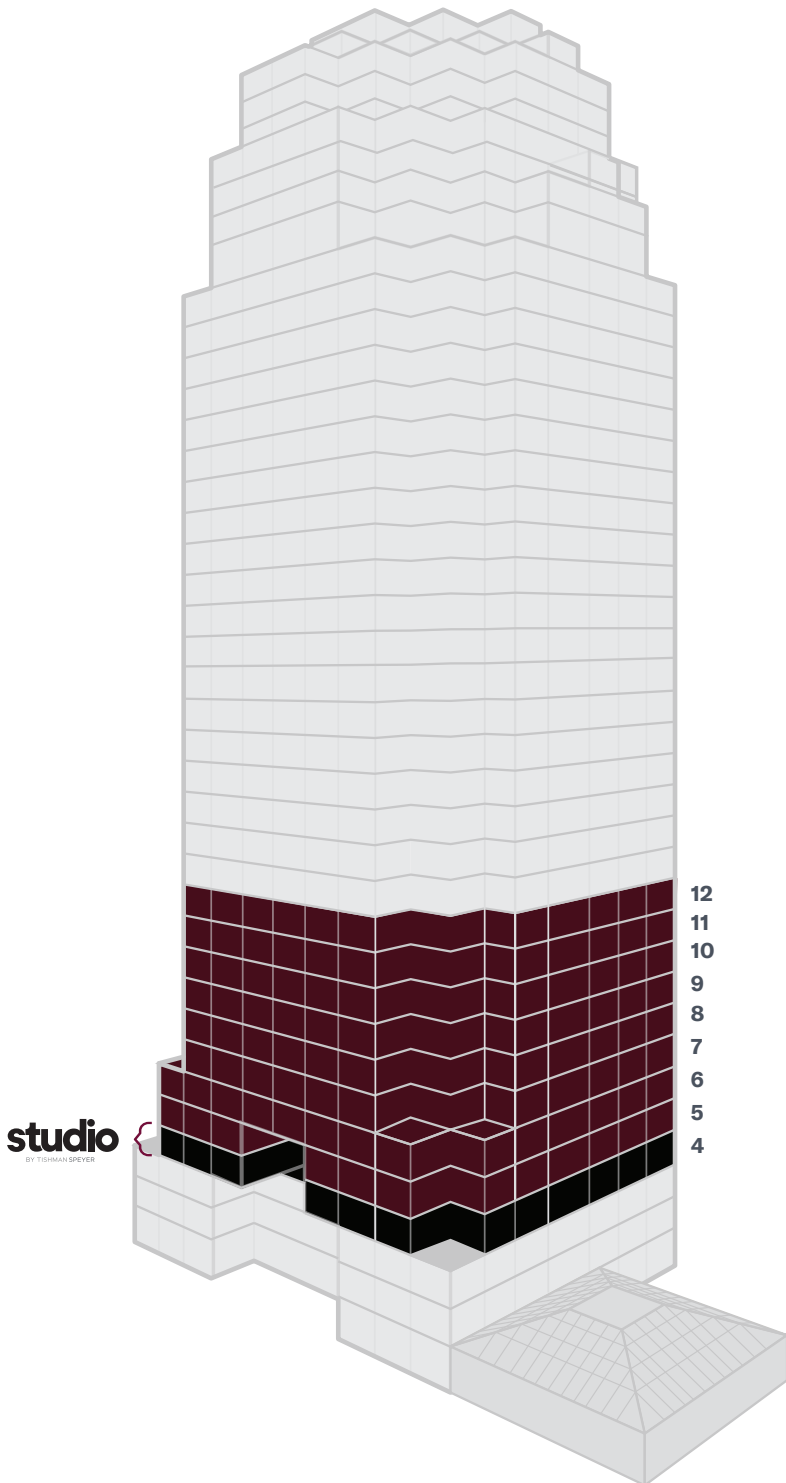
Ultimately connected, where the relationship between business and transit, work and leisure arrive in a single seamless experience.

- 1 SALESFORCE TRANSIT CENTER
- 2 BART & MUNI STATION
- 3 MUNI STATION - FERRY PLAZA
- 4 GOLDEN GATE FERRY TERMINAL
- 5 BELOW-GRADE VALET PARKING



# Big Block Availability Summary

Floor	Suite	SF Available	Date Available	Full Details
12	1200	17,662 SF	12/1/2023	<a href="#">View Details</a>
11	1100	17,620 SF	NOW	<a href="#">View Details</a>
10	1000	17,620 SF	NOW	<a href="#">View Details</a>
9	900	17,566 SF	NOW	<a href="#">View Details</a>
8	800	19,075 SF	NOW	<a href="#">View Details</a>
7	775	5,842 SF	NOW	<a href="#">View Details</a>
7	700	11,846 SF	NOW	<a href="#">View Details</a>
6	600	17,291 SF	8/10/2023	<a href="#">View Details</a>
5	500	18,180 SF	8/10/2023	<a href="#">View Details</a>
4	400	<b>studio</b> FLEXIBLE	NOW	<a href="#">View Details</a>



**ALLEN PALMER**  
415.344.6622  
apalmer@tishmanspeyer.com

**PATRICK DEVINGER**  
415.273.7921  
pdevinger@tishmanspeyer.com



TISHMAN SPEYER

# Availability

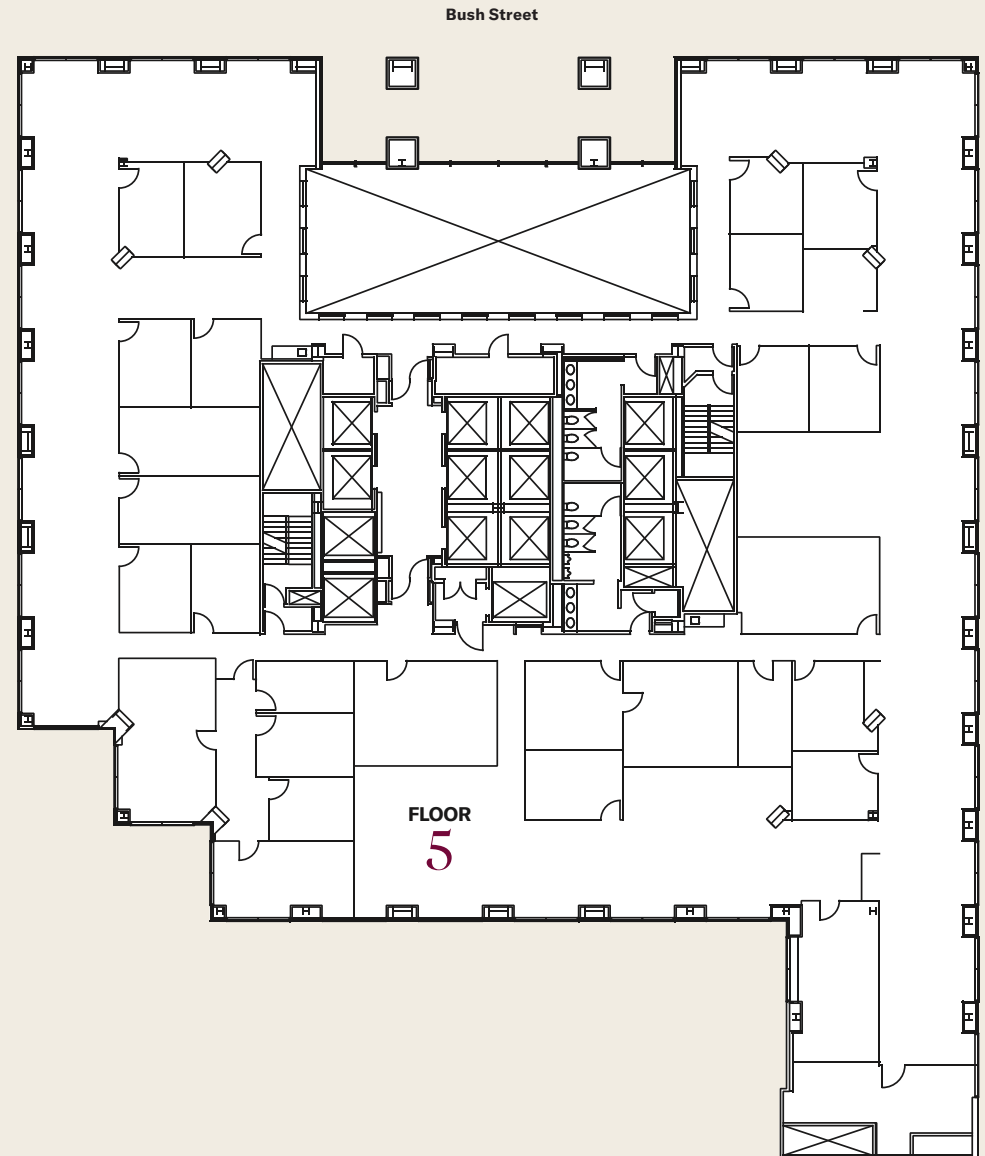
- **FLOOR 5**
- **AVAILABLE 8/10/23**
- **18,180 SF\***

\*Can be combined for up to 125,040 SF contiguous

## Suite Features

- Highly improved professional build out with ample conference rooms
- Can be delivered as-is or in shell condition

Visit [tishmanspeyersf.com](https://www.tishmanspeyersf.com) or click below for a link to more information



**ALLEN PALMER**  
415.344.6622  
apalmer@tishmanspeyer.com

**PATRICK DEVINGER**  
415.273.7921  
pdevinger@tishmanspeyer.com



**TISHMAN SPEYER**

# Availability

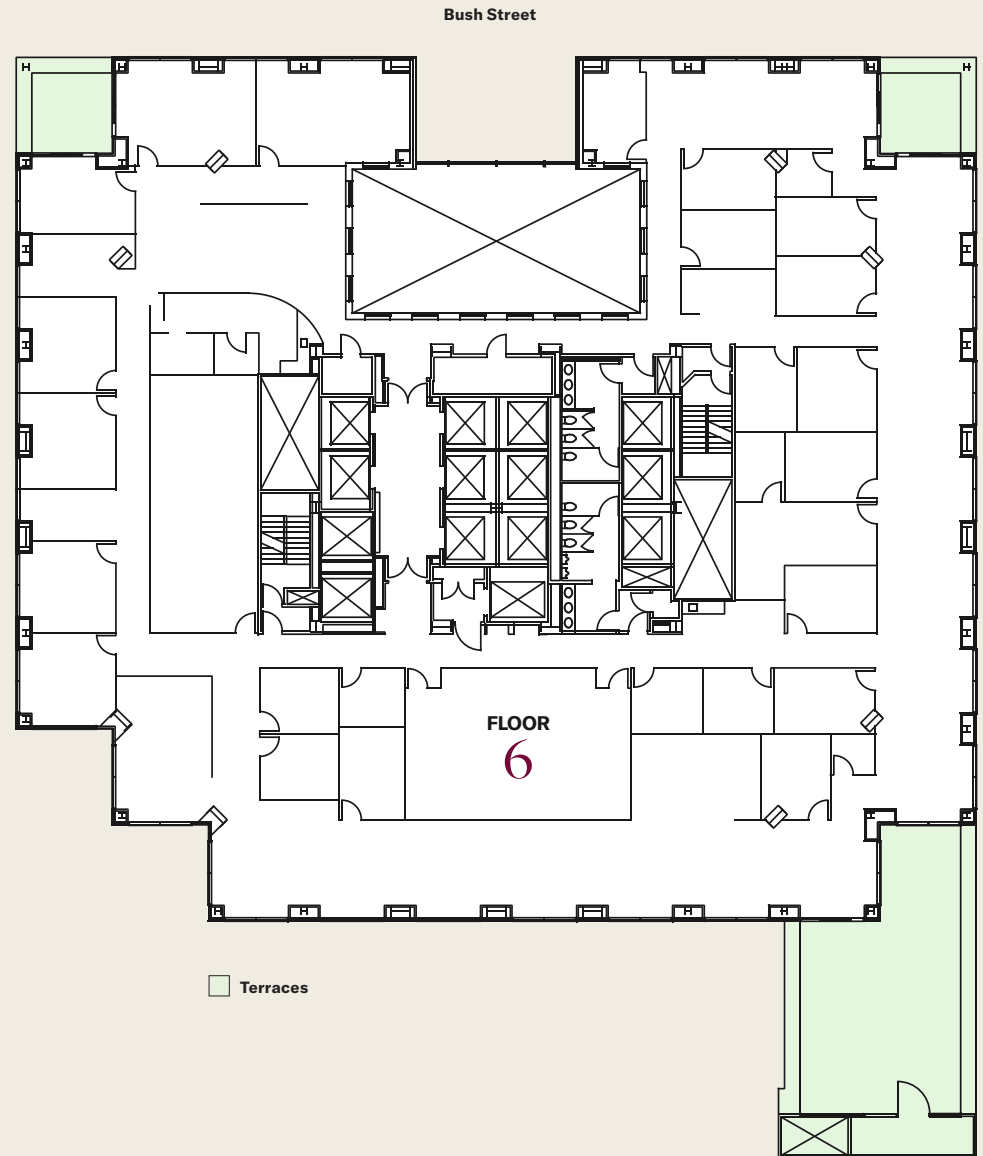
- **FLOOR 6**
- **AVAILABLE 8/10/23**
- **17,291 SF\***

\*Can be combined for up to 125,040 SF contiguous

## Suite Features

- Three (3) outdoor terraces
- Highly improved professional build out with ample conference rooms
- Can be delivered as-is or in shell condition

Visit [tishmanspeyersf.com](https://www.tishmanspeyersf.com) or click below for a link to more information



**ALLEN PALMER**  
415.344.6622  
apalmer@tishmanspeyer.com

**PATRICK DEVINGER**  
415.273.7921  
pdevinger@tishmanspeyer.com



**TISHMAN SPEYER**

# Availability

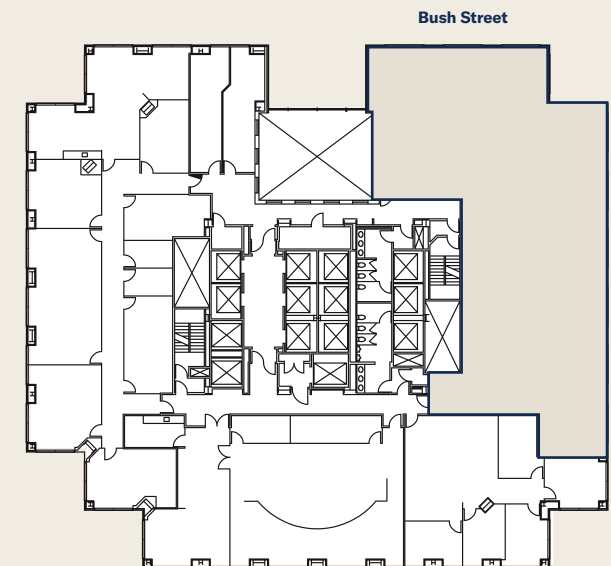
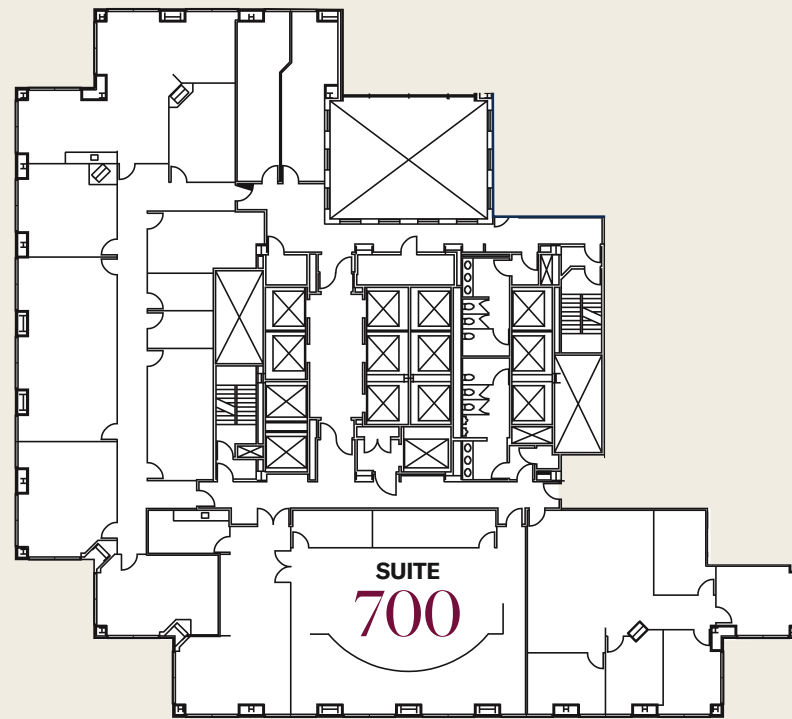
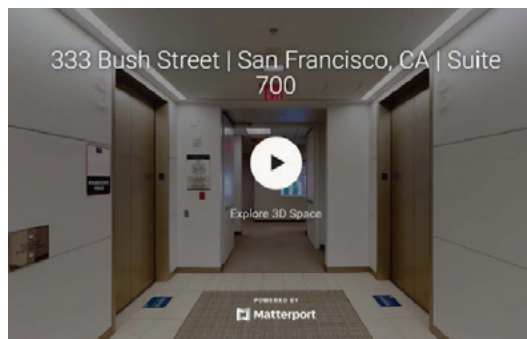
- SUITE 700
- FLOOR 7
- AVAILABLE NOW
- 11,846 SF\*

\*Can be combined with 8th Floor and/or Suite 775

## Suite Features

- Conference center build out with public hearing room
- Café with Bush Street views
- Substantial value of existing infrastructure

Visit [tishmanspeyersf.com](https://tishmanspeyersf.com) or click below for a link to our virtual tour



**ALLEN PALMER**  
415.344.6622  
apalmer@tishmanspeyer.com

**PATRICK DEVINGER**  
415.273.7921  
pdevinger@tishmanspeyer.com



TISHMAN SPEYER

# Availability

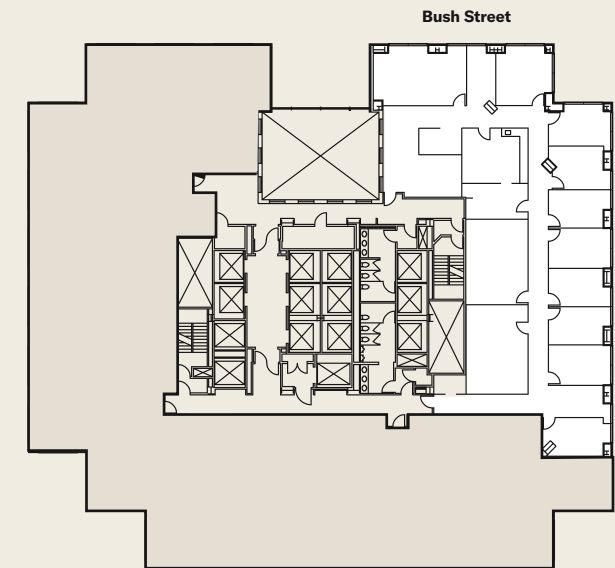
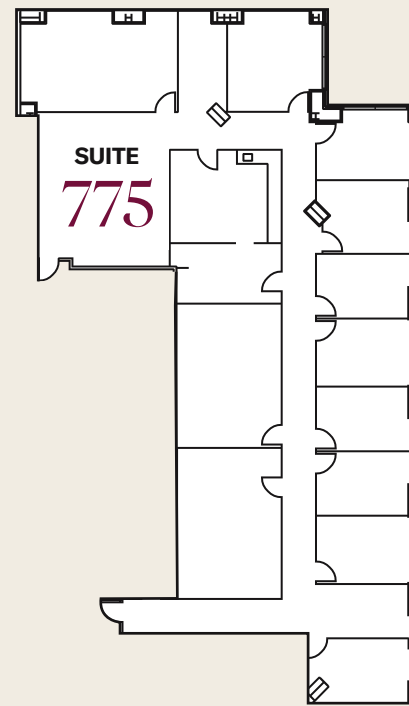
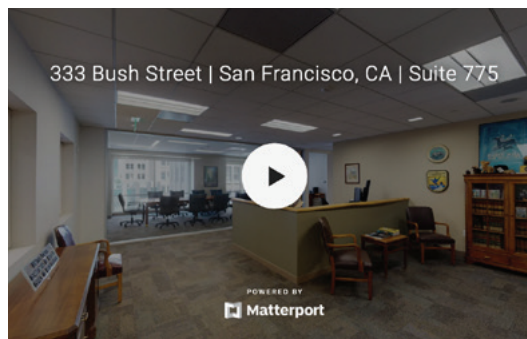
- **SUITE 775**
- **FLOOR 7**
- **AVAILABLE NOW**
- **5,842 SF\***

\*Can be combined with 8th Floor and/or Suite 700

## Suite Features

- Nice professional improvements with ample window line
- Formal reception and large conference room
- 9 window lined private offices
- Kitchenette and interior storage / production areas

Visit [tishmanspeyersf.com](https://www.tishmanspeyersf.com) or click below for a link to our virtual tour



**ALLEN PALMER**  
415.344.6622  
apalmer@tishmanspeyer.com

**PATRICK DEVINGER**  
415.273.7921  
pdevinger@tishmanspeyer.com



**TISHMAN SPEYER**

# Availability

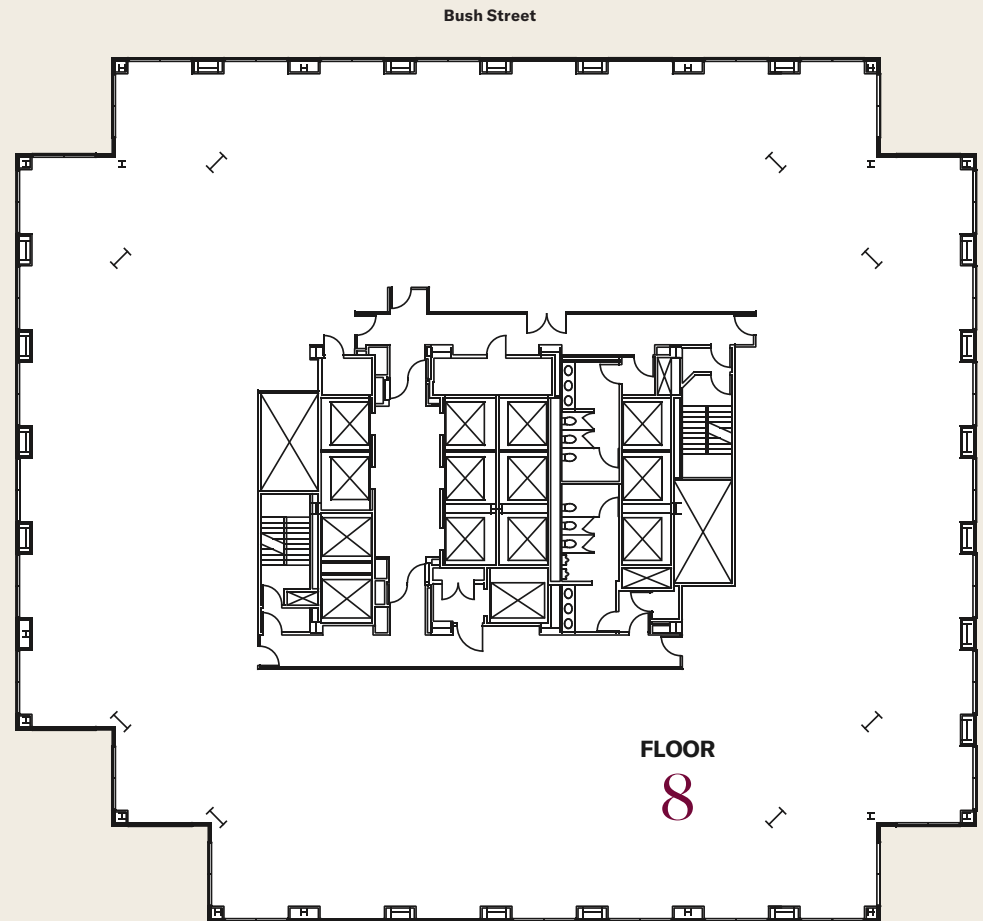
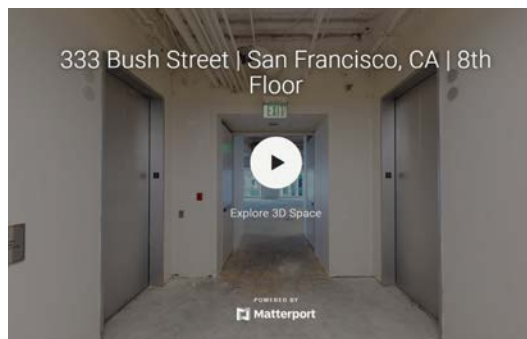
- **FLOOR 8**
- **AVAILABLE NOW**
- **19,075 SF\***

\*Can be combined with Suite 700 and/or Suite 775

## Suite Features

- Shell condition

Visit [tishmanspeyersf.com](https://tishmanspeyersf.com) or click below for a link to our virtual tour



**ALLEN PALMER**  
415.344.6622  
apalmer@tishmanspeyer.com

**PATRICK DEVINGER**  
415.273.7921  
pdevinger@tishmanspeyer.com



TISHMAN SPEYER

# Availability

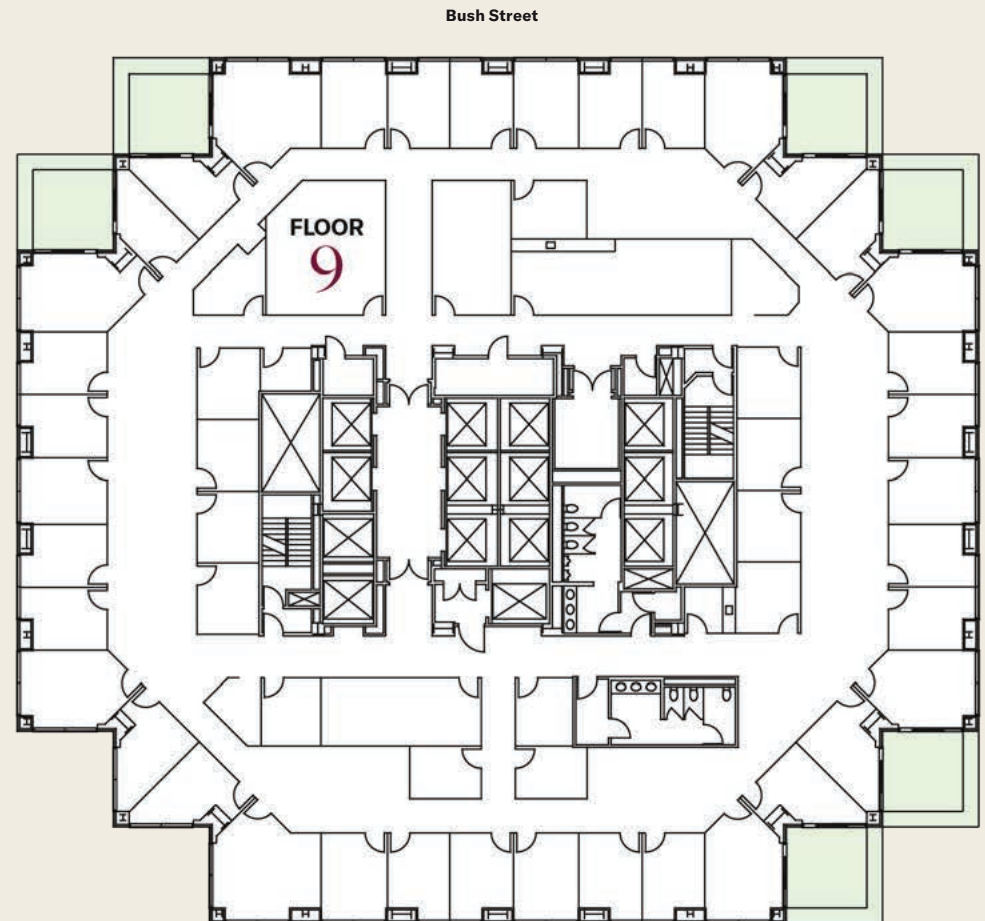
- **FLOOR 9**
- **AVAILABLE NOW**
- **19,075 RSF\***

\*Can be combined for up to 142,702 SF contiguous

## Suite Features

- Existing private office build out with over 35 exterior private offices

Visit [tishmanspeyersf.com](http://tishmanspeyersf.com) or click below for a link to more information



**ALLEN PALMER**  
415.344.6622  
apalmer@tishmanspeyer.com

**PATRICK DEVINGER**  
415.273.7921  
pdevinger@tishmanspeyer.com



TISHMAN SPEYER



# Availability

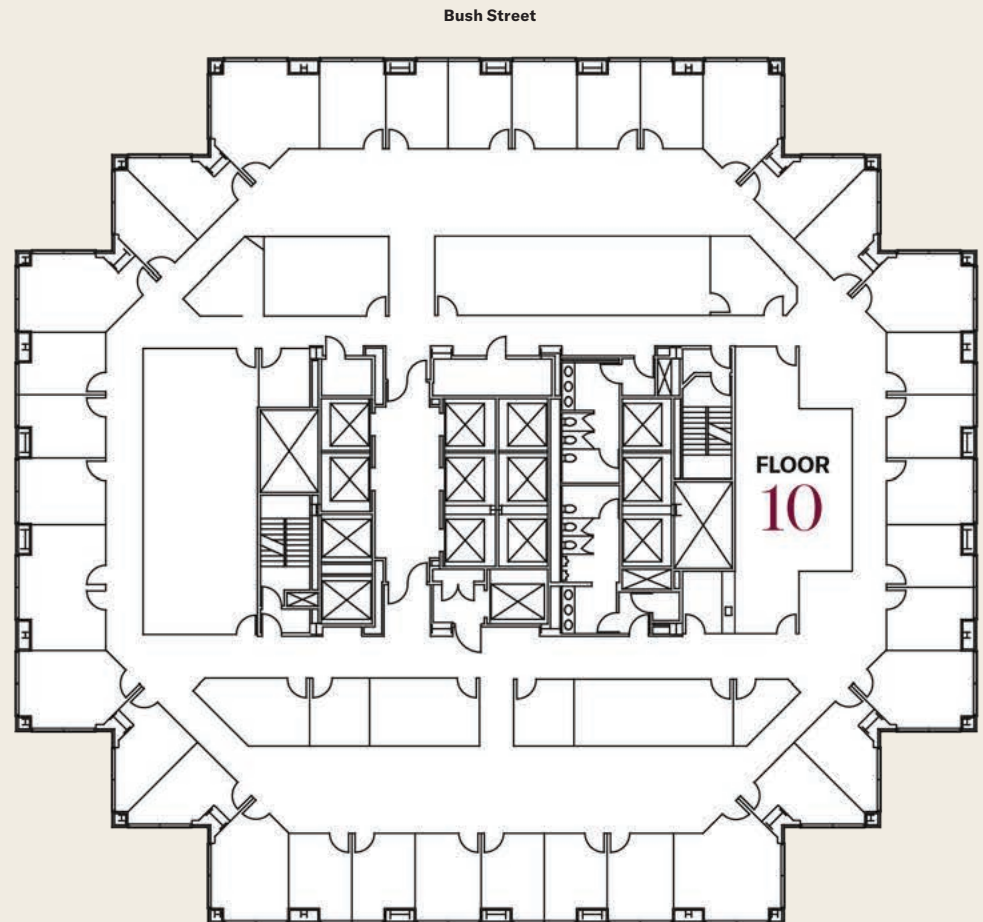
- **FLOOR 10**
- **AVAILABLE NOW**
- **17,620 RSF\***

\*Can be combined for up to 142,702 SF contiguous

## Suite Features

- Existing private office build out with over 35 exterior private offices

Visit [tishmanspeyersf.com](https://www.tishmanspeyersf.com) or click below for a link to more information



**ALLEN PALMER**  
415.344.6622  
apalmer@tishmanspeyer.com

**PATRICK DEVINGER**  
415.273.7921  
pdevinger@tishmanspeyer.com



TISHMAN SPEYER

# Availability

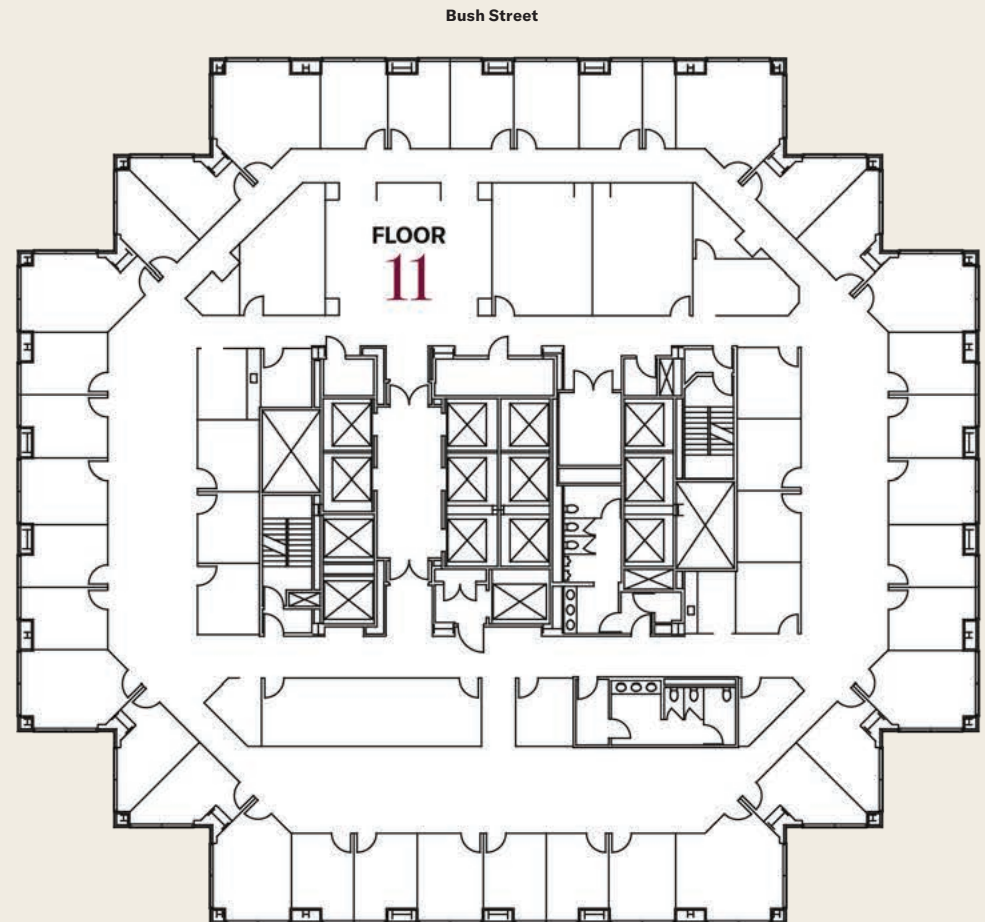
- **FLOOR 11**
- **AVAILABLE NOW**
- **17,620 RSF\***

\*Can be combined for up to 142,702 SF contiguous

## Suite Features

- Existing private office build out with over 35 exterior private offices

Visit [tishmanspeyers.com](https://www.tishmanspeyers.com) or click below for a link to more information



**ALLEN PALMER**  
415.344.6622  
apalmer@tishmanspeyer.com

**PATRICK DEVINGER**  
415.273.7921  
pdevinger@tishmanspeyer.com



TISHMAN SPEYER

# Availability

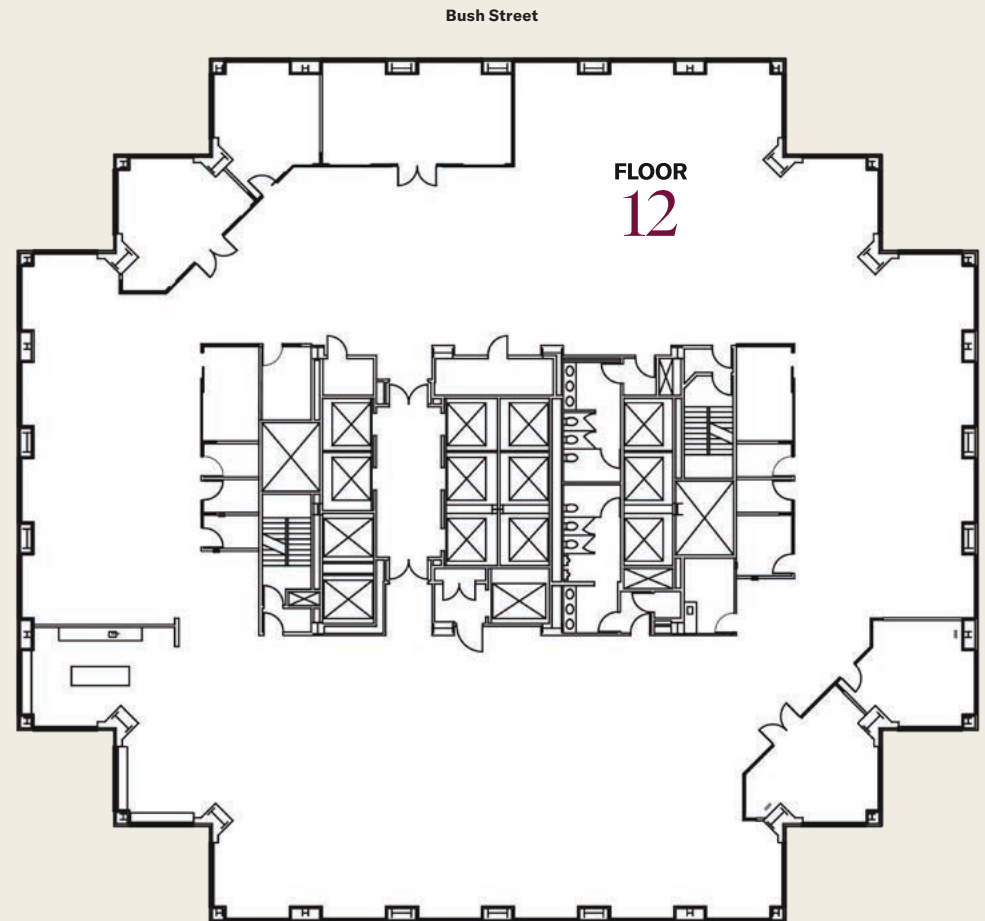
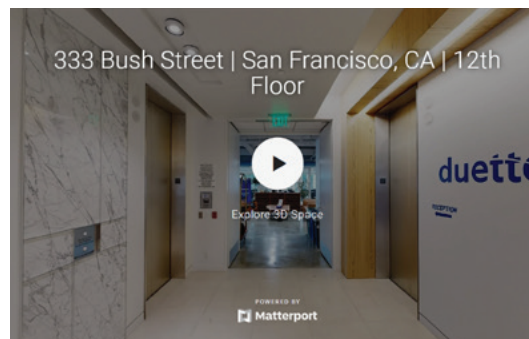
- **FLOOR 12**
- **AVAILABLE 12/1/23**  
**(POTENTIALLY SOONER)**
- **17,662 RSF\***

\*Can be combined for up to 142,702 SF contiguous

## Suite Features

- Full floor with creative finishes including exposed ceilings and polished concrete
- 5 large conf. rooms plus 8 medium / small conf. rooms
- Wellness room
- Open kitchen with bar height seating
- FF&E may be available from current tenant (TBD)

Visit [tishmanspeyersf.com](https://tishmanspeyersf.com) or click below for a link to our virtual tour



**ALLEN PALMER**  
415.344.6622  
apalmer@tishmanspeyer.com

**PATRICK DEVINGER**  
415.273.7921  
pdevinger@tishmanspeyer.com



TISHMAN SPEYER

# Our Bay Area at a Glance

Creative innovation meets artistic integration in all of our San Francisco Bay Area-based properties. From thriving downtown office towers to residential developments beaming with possibility, creating meaningful experiences that seamlessly connect work, home and life has been at the heart of who we are since 1978.

**2.4MM**  
SF OFFICE SPACE

**3,200+**  
MARKET RATE UNITS

**1,100+**  
AFFORDABLE HOUSING UNITS

ACTIVE PROPERTIES



One Bush



160 Spear



333 Bush



222 Second



595 Market



400 Castro

NEW DEVELOPMENTS



Brannan Square



Mission Rock



MIRA



# Get in Touch

**ALLEN PALMER**

415.344.6622

[apalmer@tishmanspeyer.com](mailto:apalmer@tishmanspeyer.com)

**PATRICK DEVINGER**

415.273.7921

[pdevinger@tishmanspeyer.com](mailto:pdevinger@tishmanspeyer.com)



TISHMAN SPEYER